

DUAL SCREEN ORDER MANAGEMENT CONSOLE

LKS-A10-1565

Plastic Material

15.6" All in one POS

Made from high-strength plastic, the product ensures quality while reducing costs, enhancing its market competitiveness.

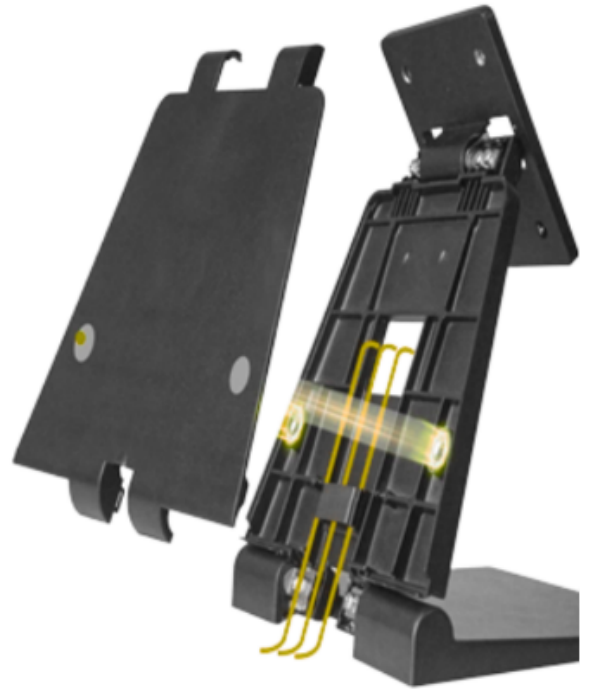
A brand-new screen specifically designed for POS systems, offering a longer lifespan and reducing after-sales costs.

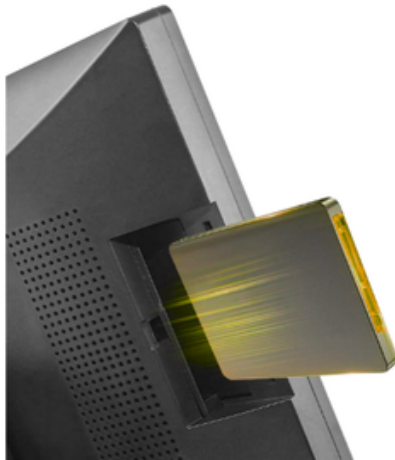


Magnetic folding stand

The foldable base design results in a smaller packaging size, saving up to one-third of the shipping costs.

The stand features a magnetic rear cover design, which is easy to remove and conceals cables, reducing safety hazards and maintaining a neat appearance.





2.5" HD EXTENSION

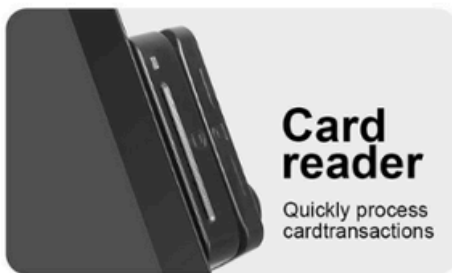
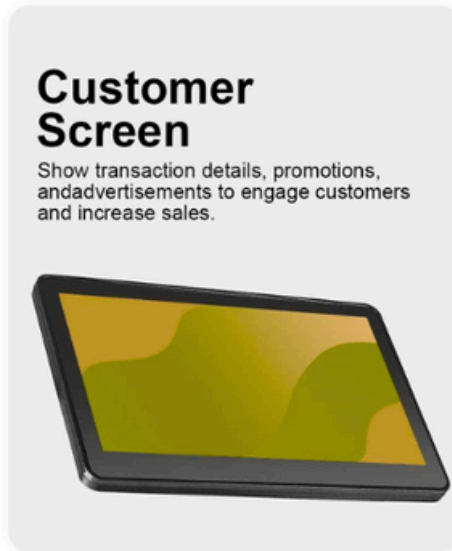
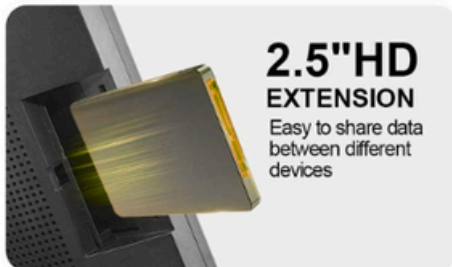
A 2.5-inch removable hard disk drive (HDD) interface, which facilitates expanding storage capacity and allows for easy replacement or upgrade of the hard disk.



Modular Configuration

The top of the device can be optionally equipped with a VFD or an 7/10.1/11.6-inch secondary screen to meet the needs of different customers.

Side interfaces are reserved for optional MSR or button, catering to diverse market demands.



Versatile IO Support



PRODUCT SPECIFICATIONS

Specification	Details
CPU Support	Intel Core i3 10th gen / Intel Core i5 10th gen
System Memory	DDR3, SO-DIMM, 4GB (Max. 8GB)
Storage	1 x SATA 3.0 Connector 1 x mSATA 128GB (256GB/512GB Optional)
LCD	15.6" TFT LCD Panel Brightness: 250cd/m ² (Typ.) Resolution: 1366×768 (1920×1080 Optional)
Touch Screen	10 point True-flat Projected Capacitive Touch
Tilt Angle	0° – 60°
USB	2 x USB 3.0 + 4 x USB 2.0
Serial Port	Serial x1 (DB9, COM1~3: 0/5/12V by Pin-JP)
VGA	1 x VGA (Power Enable by BIOS; +12V)
HDMI	1 x HDMI
LAN	1 x LAN (10/100M/RJ45)
Audio	1 x Mic-In/Speaker-out (Combo Jack)

PRODUCT SPECIFICATIONS

Specification	Details
DC-IN	1 x DC-In
Optional	MSR + iButton or RFID Combo USB (VCOM) Optional MSR + Fingerprint Stand: MS-06/MS-10 Customer Display: VFD, USB, 5mm 2x20 Characters 2nd Display: 7"/10.1"/15.6" (1366×768, 1920×1080 Optional)
Power Switch	1 x Power Switch
Speaker	2 x 2W Speaker (Optional)
Power	External Power Adapter, 12V-5A/60W
EMC Safety	CE, ROHS
Environment	Operating Temp: 0°C ~ 50°C Storage Temp: -20°C ~ 70°C Humidity: 20% ~ 85% RH Non-Condensing
OS Support	Windows 10, Linux

PRODUCT SPECIFICATIONS

Specification	Details
Dimension (W x D x H)	468mm × 314mm × 385mm
Weight	11.36Kg (2 items per box)
Wall Mount	VESA 75 × 75mm
WiFi	mPCI-E WiFi (2.4/5G) / BT (4.2)
Optional	MSR + iButton or RFID Combo USB (VCOM) Optional MSR + Fingerprint Stand: MS-06/MS-10 Customer Display: VFD, USB, 5mm 2x20 Characters 2nd Display: 7"/10.1"/15.6" (1366×768, 1920×1080 Optional)